



SHINING 3D®

*EinScan-Pro™*

Multi-Functional  
Handheld 3D Scanner





## The handheld 3D scanner for all your needs

The EinScan-Pro is your best choice for capturing real world data to convert into a digital 3D model. It can be used for consumer and commercial applications in manufacturing, engineering, design, development, testing, artwork archival, animation and even human form acquisition. The EinScan-Pro 3D scanner allows you to use physical objects to better conceptualize an idea or create a starting point for modeling in CAD (Computer Aided Design).

The EinScan-Pro can capture textured and colored objects ranging in size from 0.03mm (.001in) up to 4 meters (13ft).

The EinScan-Pro's comfortable, ergonomic design makes it the perfect choice for extensive, long-lasting projects. Weighing only 0.8kg (1.76lbs.) this light, handheld portable scanner can often create more-accurate and better-fitting parts when compared with from-scratch models from a CAD system.

The EinScan-Pro scanning software allows users to create "open" models for reverse engineering in a CAD system or it can create "closed" watertight models that are ideal for 3D printing.

## Four mode scanning versatility

The EinScan-Pro multi-functional 3D scanner offers both portability and accuracy because of its four versatile scanning modes: Handheld rapid scan, Handheld HD scan, Automatic scan, and Free scan. An add-on Industrial Pack enables automatic scanning by matching the EinScan-Pro with a fully-automatic turntable or users can enable Free scanning by fixing the scan head to the tripod.



▶ Handheld Rapid Scan



▶ Handheld HD Scan

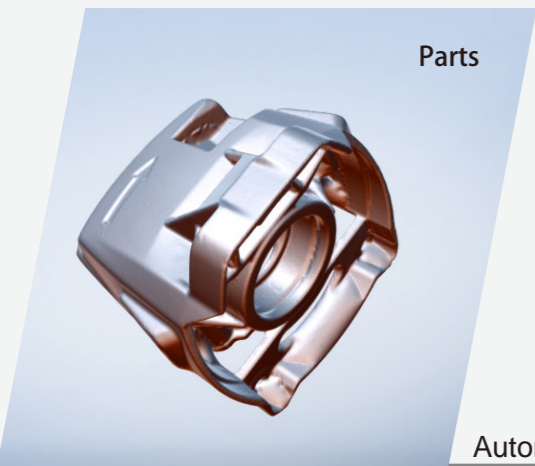
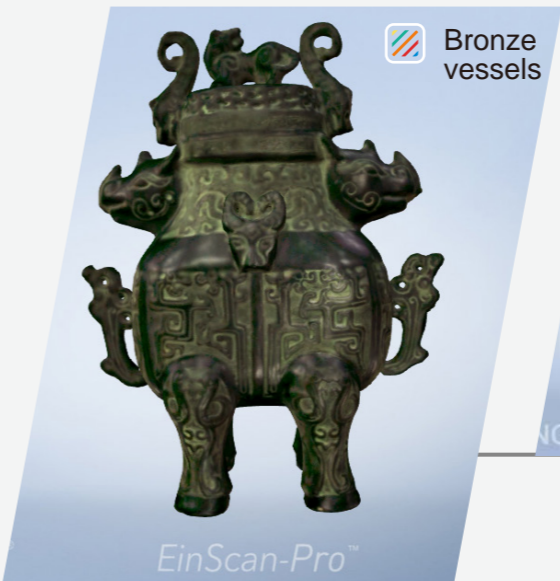
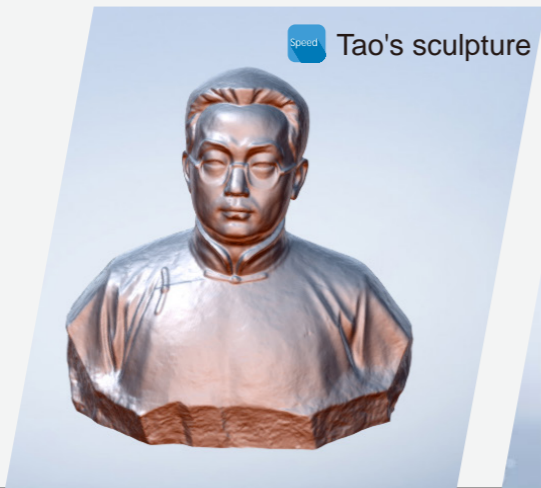


▶ Free Scan

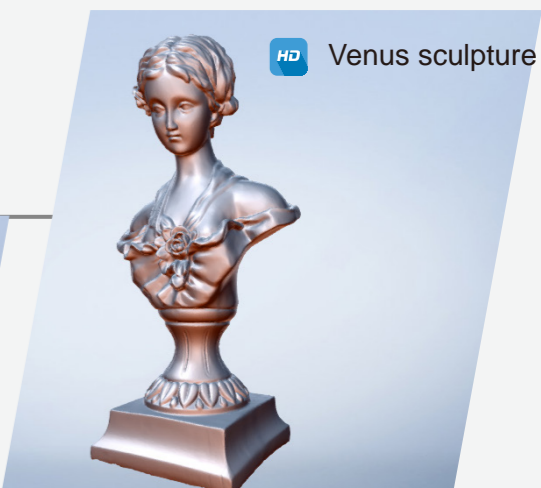


▶ Automatic Scan

Handheld Rapid Scan



Handheld HD Scan



## Full Color Scan

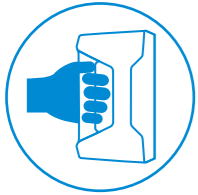
By attaching an external texture camera, the EinScan-Pro can capture geometric shapes with full-color and texture information. This can be useful for computer graphics, animation, game development, digital archiving, prototyping and color 3D printing.



Color Texture

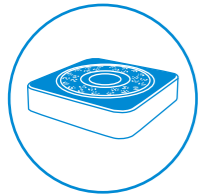


## No Scan Limits



### Handheld Scan

The EinScan-Pro multi-functional 3D scanner offers both portability and high-accuracy because of its four versatile operating modes.



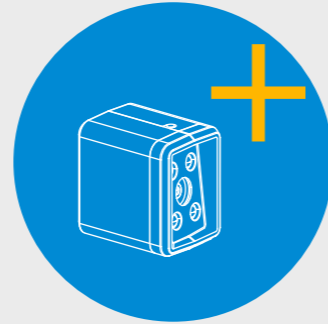
### Automatic Scan

Matched with a fully-automatic turn-table, the EinScan-Pro completes a 360-degree scan in under 90 seconds.



### Free Scan

The scan head is mounted onto the tripod for accuracy and ease-of-use.



Choose your options  
Full Color Scan  
Automatic Scan  
Free Scan

## Applications Best Supported by the EinScan-Pro.



Computer Graphics



Research and Design



Preservation of Historic Artifacts



Art



Body 3D Scanning



Education





Explore EinScan-Pro!  
You will love it.



## Compatible with most 3rd party hardware and software.

### Compatible hardware:

Desktop 3D printers, 3D laser engraving machines, color 3D printers, Freeform

### Compatible software:

MeshLab, 3D Systems

(Geomagic® Solutions), InnovMetric, Software

(PolyWorks), Dassault Systèmes

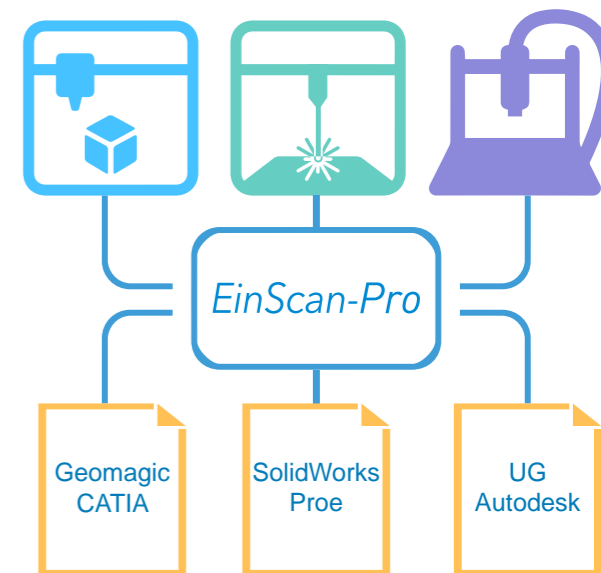
(CATIA V5 and SolidWorks),

PTC (Pro/ENGINEER),

Siemens (NX and Solid Edge),

Autodesk (Inventor, Alias, 3ds Max, Maya,

Softimage, Meshmixer,).





### All in one versatility

Offer both portability and high-accuracy because of its four versatile operating modes.



### Multi-applications

Create an accurate, 3D printable model of existing physical objects—whether it be an industrial part, a sculpture, a delicate family heirloom, an antique toy, a hard-to-find replacement part for your tool kit or even a scan of your own body parts.



### High speed

In the handheld scan mode, the scan speed is 10 fps (frames per second) and in the automatic and free scan modes, a single scan takes less than 2 seconds.



### Full color scan

By attaching an external texture camera, the EinScan-Pro can capture geometric shapes with full-color and texture information. This can be useful for computer graphics, animation, game development, digital archiving, prototyping and color 3D printing.



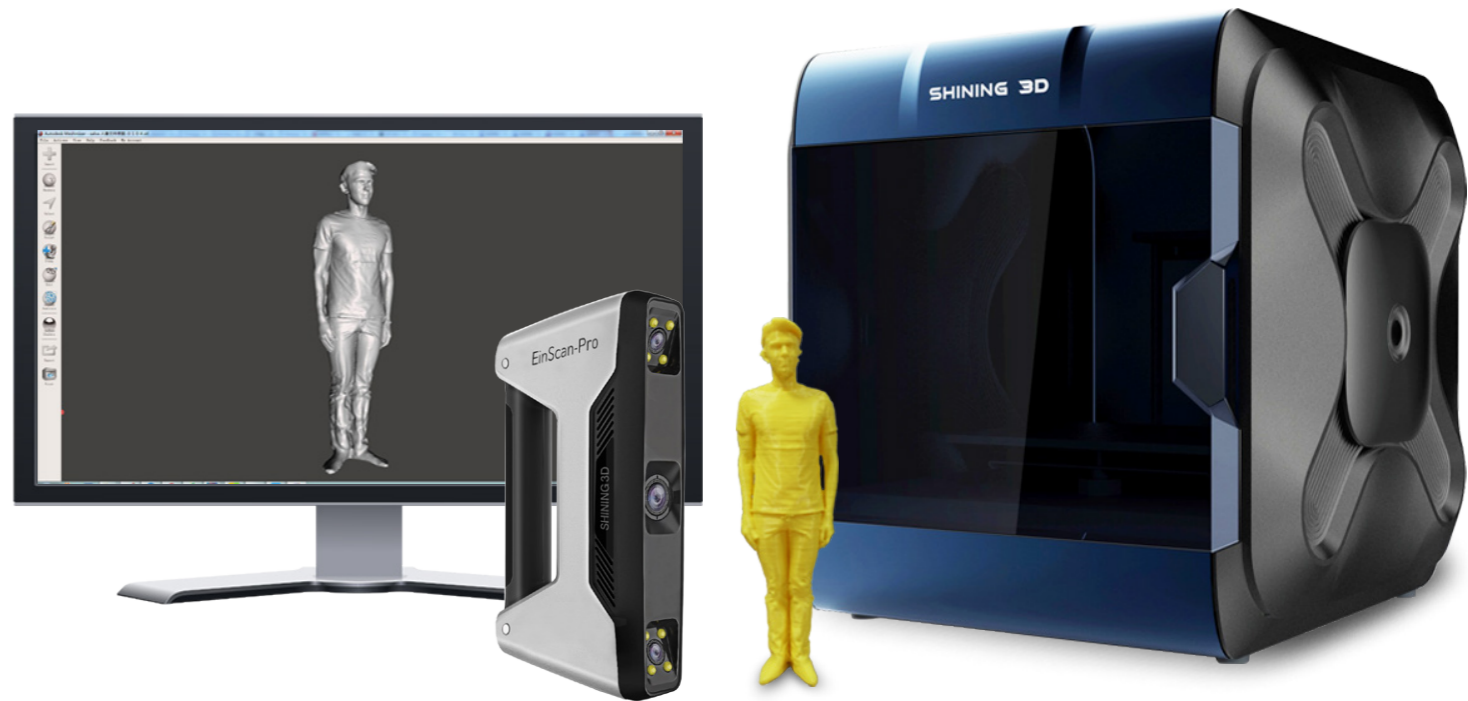
### Highly compatibility

All you have to do is “point and click” and the scan process turns your real world objects into 3D digital models on your computer.



### Cost-effective

With high data quality at an entry-level price, it has earned a reputation among leading technology professionals as being the most cost-effective of all 3D scanners .



## Specification

Scan mode	Handheld HD scan	Handheld rapid scan	Automatic scan	Free scan
Scan accuracy	0.1mm (.0039in)	0.3mm (.01181in)	0.05mm(.0019in) single scan	0.05mm (.0019in) single scan
Scan speed	15 fps	10 fps	Single scan: <2s	Single scan: <2s
Point distance	0.2mm-2mm (.0078-.078in)	0.5mm-2mm (.0196-.078in)	0.16mm (.0062in)	0.16mm (.0062in)
Single scan range	210x150mm(8.27x5.9in)			
Light source	White light LED			
Part size range (recommended)	0.03m-4m(.0011in-13ft)	0.15m-4m(.0059in-13ft)	0.03m-0.15m(.0011-5.9in)	0.03m-4m(.0011in-13ft)
Align mode	Reference point align	Feature align	Turntable align	Reference point, feature, turntable align
Texture scan (Add-on module )	No	Yes	Yes	Yes
Outdoor operation	No (affected by strong light)			
Special scan object	For a transparent, reflective or dark object, please powder spray prior to scanning			
Printable data output	Yes			
Data format	OBJ, STL, ASC, PLY			
Scan head weight	0.8kg(1.76lbs)			
System support	Windows 7, 8 or 10, 64bit			
Sharing to Sketchfab	Yes			
Display card	NVIDIA GTX660 or higher, Display memory: >2G, Processor: I5 or higher, Memory Storage: 8G or more			

Notice: More detailed information about the products, please visit our web for inquiry.



Basic Pack



Industrial Pack



Color Pack



Basic+Color+Industrial Pack







# SHINING 3D®

Email : [sales@3dcadcam.com.tr](mailto:sales@3dcadcam.com.tr)

Tel: +009(0216)3803948

[www.3dcadcam.com.tr](http://www.3dcadcam.com.tr)

[www.einscan.pro](http://www.einscan.pro)

Address: 3D CAD/CAM TECHNOLOGY Inc. - TURKIYE| A CAD CAM RE CAE Company , Yalı you sok.Ismail ergin is merkezi No;52/A 8- 9 Ustbostancı | 34744 Istanbul | TURKEY |