

Reverse Engineering

PRINCE 3D scanning system could rapidly capture the 3D file of the objects and present the geometry model at real time, which could greatly simplify the design or re-design process of products developing.

No matter what the material or shining surface, the system could scan quickly and easily.

No matter what size of the parts such as small coins or even bigger as a whole car body or plane, the system could get the whole 3D geometry as well as small details on the surface.



Parts Inspection

In order to control the quality of the key parts for the manufacture industry, we could use the PRINCE series handheld 3D scanner to obtain the geometry of the objects with ultra-detailed information, which could compare with the original CAD file. The inspector could easily find the deviation between the parts and CAD file or normal blue prints.



3D Digital Market

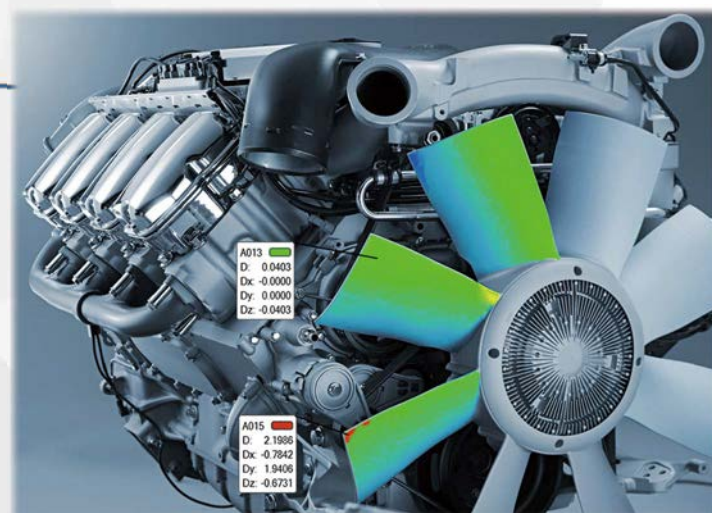
After scanning the real object, we could get the modeling of it, with which we could show and exhibition on the computer or internet for demonstration.

What's more, this 3D scan or modeling file could also export to 3D Printer or CNC machine for processing.

The scanned file could also be used for the market of VR, AR & etc.

Industry Applications

- Automobile Industry
- Aircraft & Spacecraft
- Mechanical Manufactory
- Rail & Transportation
- 3D Printing
- Education & Research
- Home Decoration
- Architectures & Cultural relic



Company Introduction

Hangzhou Scantech Co., Ltd is a high-tech enterprise located in Zhejiang overseas high-level talent innovation park & is composed of industry experts, returnees Doctors and high-tech youth talents.

Hangzhou Scantech mainly engaged in the developing, manufacturing and selling of the intelligent visual inspection equipment such as portable 3D scanner and 2D laser sensor. The portable 3D scanner, global photography measurement system and 2D laser sensor are also the foremost equipment in the market.

Leading by the returnees Doctors, the R&D team developed a series of mechanical and electronic products which possess the proprietary intellectual property rights.

Technical Parameter

PRINCE 335

Scan Mode	Standard mode R	Hyperfine scan mode B
Dimensions	315×160×105 mm	
Weight	0.95kg	
Light source	3 red cross laser lines + 1 single red laser line.	5 blue parallel laser lines.
Scan rate	265000 measures/s	320000 measures/s
Camera frame rate	60fps	120fps
Laser class	CLASSII(eye-safe)	
Resolution	0.05mm	0.02mm
Accuracy	Up to 0.03mm	
Volumetric accuracy	0.02mm+0.08mm/m	0.01mm+0.08mm/m
Volumetric accuracy (with MSCAN)	0.02mm+0.025mm/m	0.01mm+0.025mm/m
Stand-off distance	300mm	150mm
Depth of field	250mm	100mm
Effective working range	200mm~450mm	100mm~200mm
Output formats	.stl\ .ply\ .xyz\ .dae\ .fbx\ .ma\ .obj\ .asc	
temp range	-10℃~40℃	
Rapid Calibration	The ScanViewer (Scan software) has the function of Rapid Calibration. The calibrating time is less than 30 seconds.	



Industrial 3D Detection Solution

PRINCE 3D SCANNER

Red & Blue Duplicate Laser Handheld Scanner

The Perfect combination of Ultra-Detail & High Portability



SCANTECH Distributor;
3D CAD/CAM TECHNOLOGY Inc. - TURKIYE |
Yalı you sok.Ismail ergin is merkezi No;52/A 8- 9 Ustbostancı | 34744 Istanbul | TURKEY |
+9 0216 3803948 | +9 0216 3803288 | Fax : +9 216 3800118
E-mails sales@3dcadcam.com.tr www.3dcadcam.com.tr



PRINCE

Born for Ultra-Detail



Pioneering of the Unique Double Scan Mode Handheld 3D Scanner

PRINCE



Product Feature

Duplicate Scan Mode

Blue & Red Laser scan mode could rapidly switch over by press the button on the scanner.

PRINCE series are the best combination to get the ultra-detail information as well as 3D file of the object.

This handheld scanner is easy to operate and take, with good scan result whatever the part size is.

Automatic Alignment

The scan data is under the SAME coordinate system in TWO scan mode.

The Scanning software could combine the 3D file from different scan mode under one complete mode automatically. The operator could get all the 3D information as well as the detail on the object under one operation easily and efficiently.

Fast Speed

Equipped with **120fps** camera, which is the twice **HIGHER** than the most handheld scanners on the market. The high ability camera could also help to keep the stability and accuracy of the scan result.

Scan rate(**320,000 measures/s**) is also **FASTER** than most handheld scanners.

High Detail

With the highest **Resolution** reaches up to **0.01mm**, which is **5 times better** than the other handheld scanners on the market, the system could greatly increase the scan result especially on the small detail.

One Handy Scanner| Two Laser Source

Blue & Red Laser scan mode can switch rapidly. It combines the ultra-detail information as well as 3D file of the object. It's easy to operate and take, with good scan result whatever the part size is.

Red Laser Standard Scan Mode



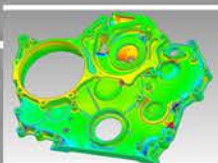
It's very easy & faster to capture the curvature and surface for the relative bigger objects.

Blue Laser Mode for Ultra-Detail

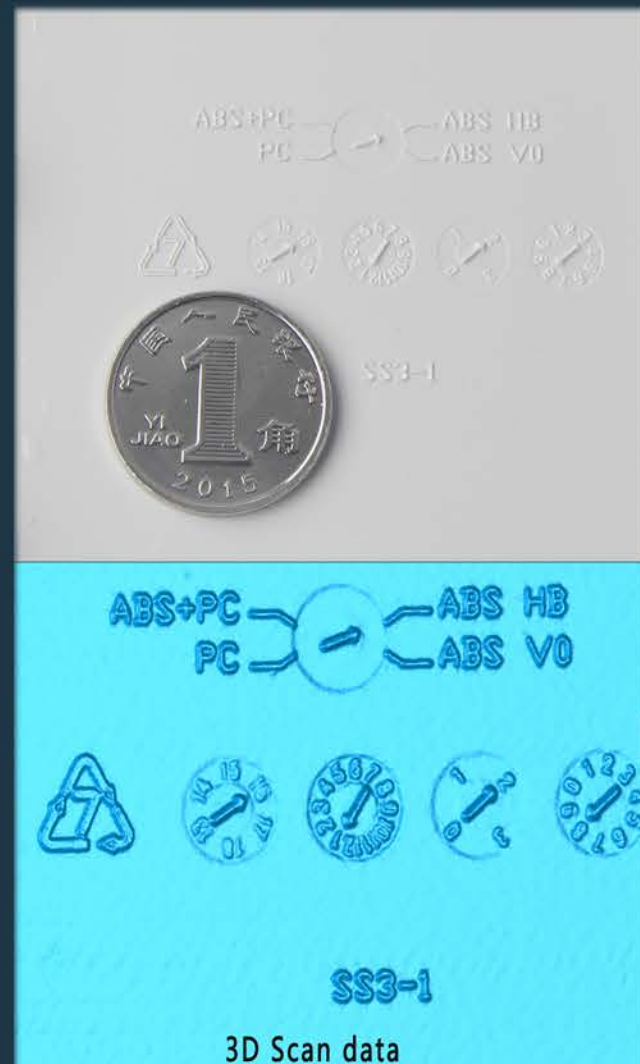


The Frame Rate is nearly twice faster than the other common Handheld scanners on the market Prince series are able to reach the highest resolution up to 0.01mm.

Multiple Applications



Free to scan and easy to capture the 3D file no matter what the size, material, color and complicated of the object or parts.



Perfect Creation for Ultra-Detail

